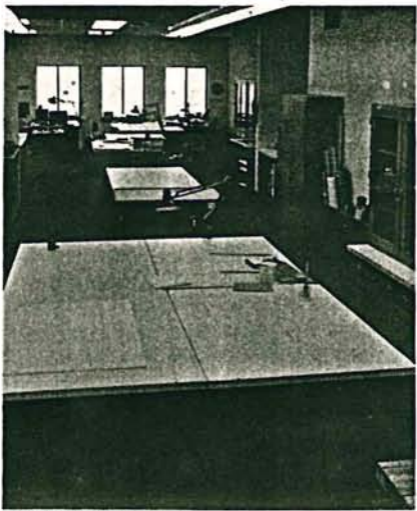


CCAHA Moves

The Conservation Center for Art and Historic Artifacts, the Philadelphia-based non-profit regional center, recently expanded its facility to a new downtown location. The new quarters combine a larger laboratory space with custom-designed features, creating an improved environment for the treatment of library and archival materials, art and historic artifacts on paper, and photographs.

Occupying 6,100 square feet on the second floor of an historic building recently renovated for professional use, the new location includes laboratory space, chemical storage, separate photography and darkroom areas, administrative offices, and expanded conference and library facilities. Dramatic clerestory lighting in the laboratory area provides the natural light necessary for visual and color references during treatment. The care and treatment of works is fully safeguarded through improved environmental controls, ultraviolet protection on windows and lights, and expanded fire and flood protection in the vault construction. A better working environment for the staff has also been created through an improved ventilation system for fume hoods and chemical storage, and more efficient location of sinks and equip-



CCAHA's new laboratory

ment. Adjacent off-street parking affords convenience to the Center's members transporting work.

Through the customizing of the fine features inherent in the new space, the Center's expansion offers a superior facility for providing conservation services. (See CAN Number 19, page 6, for a description of one CCAHA project.)

For additional information, contact Abby A. Shaw, Executive Director, CCAHA, 264 South 23rd Street, Philadelphia, PA 19103; (215) 545-0613.